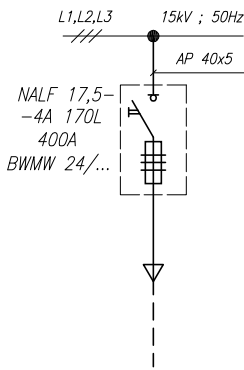
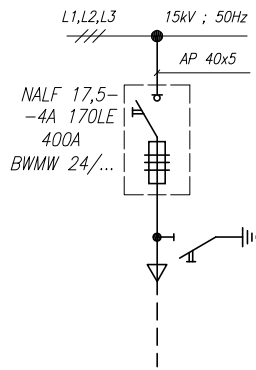


Schematy zasadnicze pól Ma15

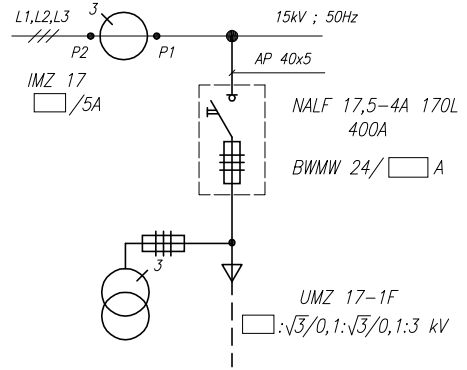
Ma15-T1



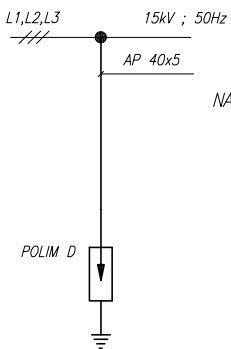
Ma15-T5



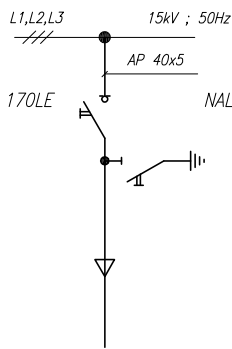
Ma15-TP1



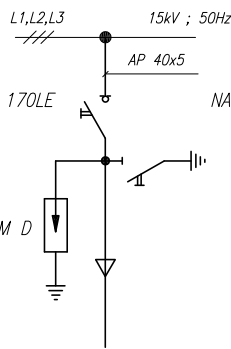
Ma15-O1



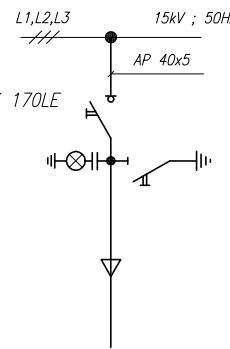
Ma15-L1



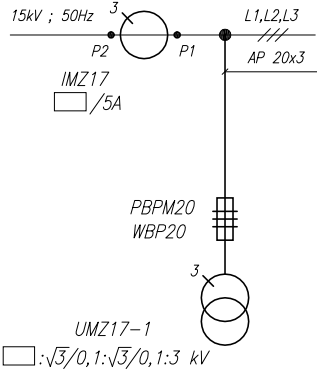
Ma15-L1O1



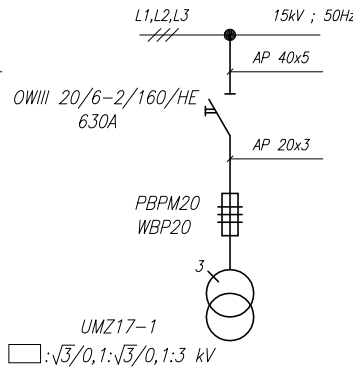
Ma15-L1+izol.reakt.



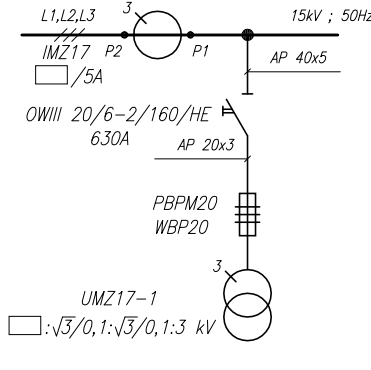
Ma15-P2



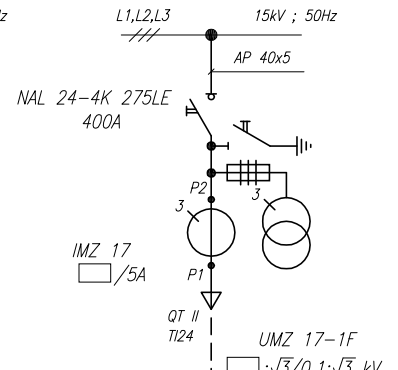
Ma15-P5



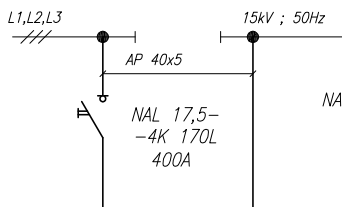
Ma15-P5a



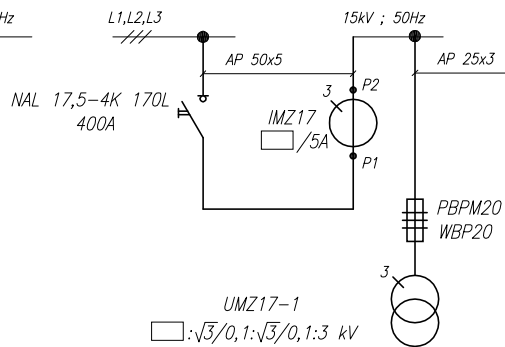
Ma15-L1P



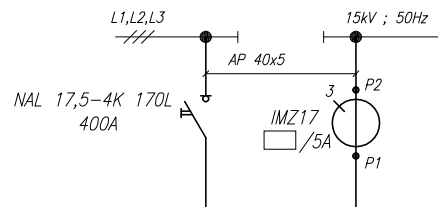
Ma15-S4



Ma15-S4+P6

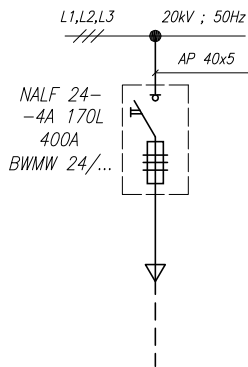


Ma15-S6

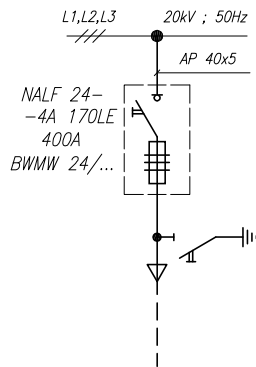


Schematy zasadnicze pól Ma20

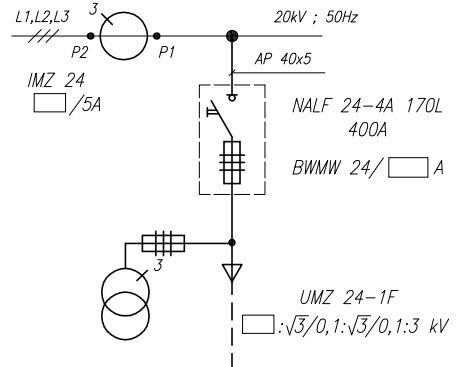
Ma20-T11



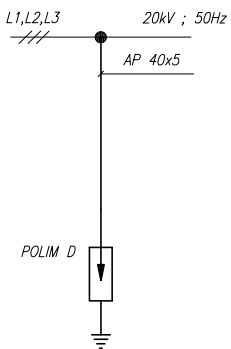
Ma20-T15



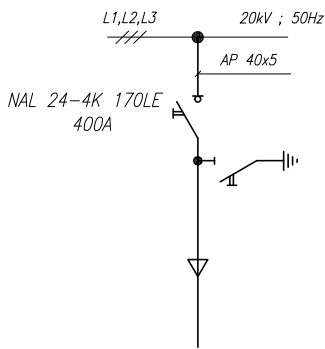
Ma20-TP11



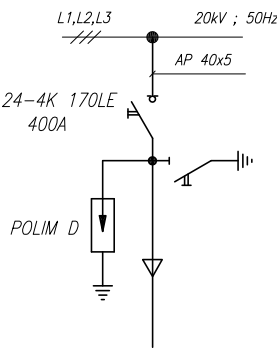
Ma20-O11



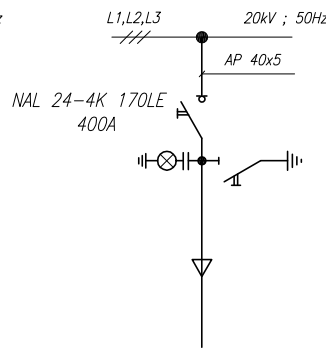
Ma20-L11



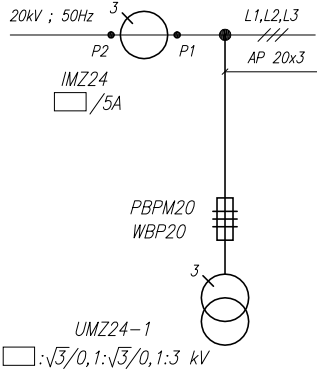
Ma20-L1101



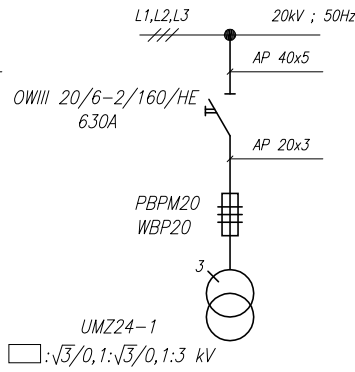
Ma20-L11+izol.reakt.



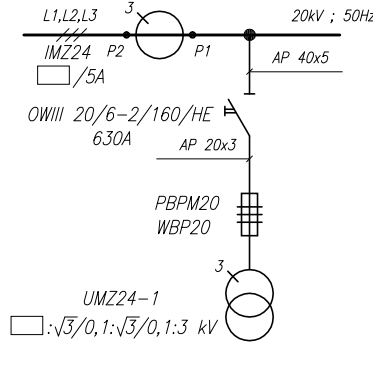
Ma20-P12



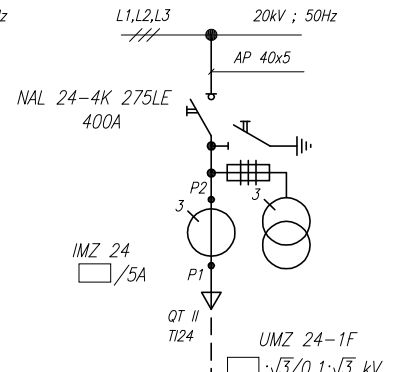
Ma20-P15



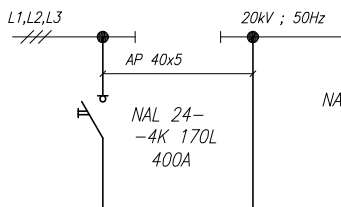
Ma20-P15a



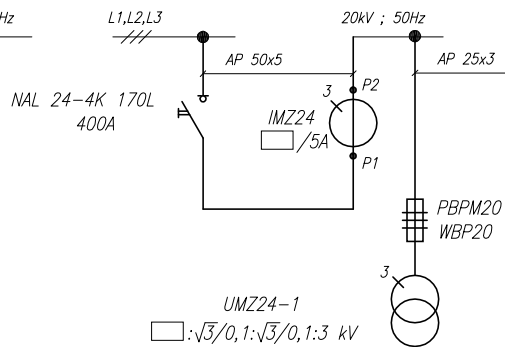
Ma20-L11P



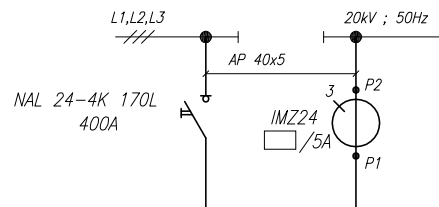
Ma20-S14



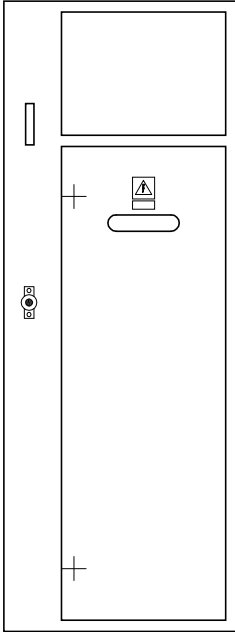
Ma20-S14+P12



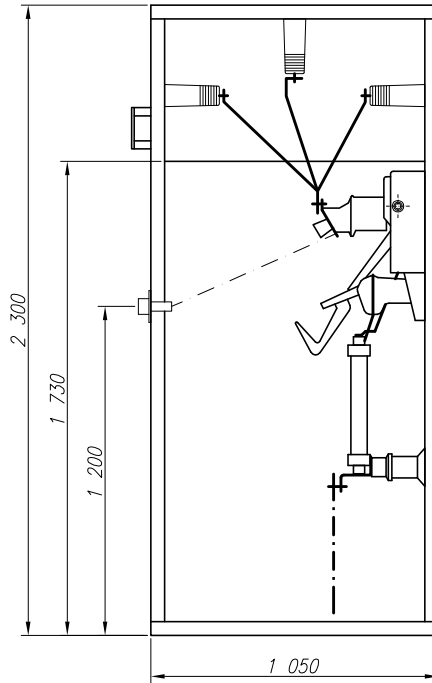
Ma20-S16



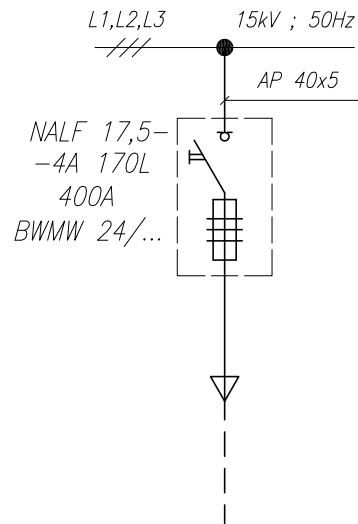
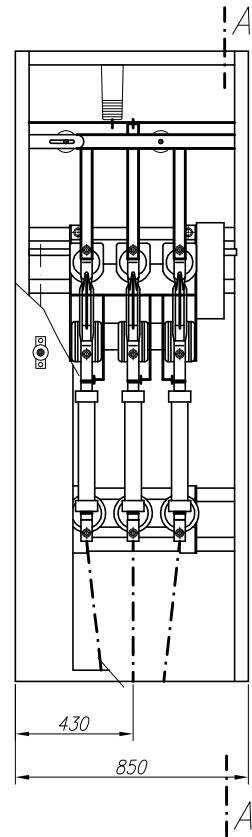
Elewacja



A-A

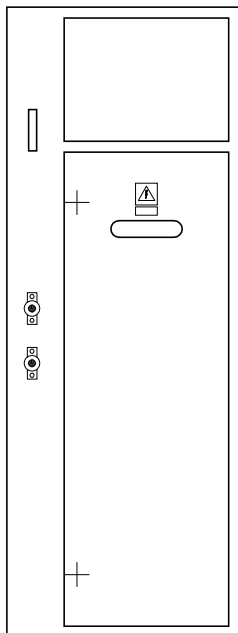


Widok bez drzwi

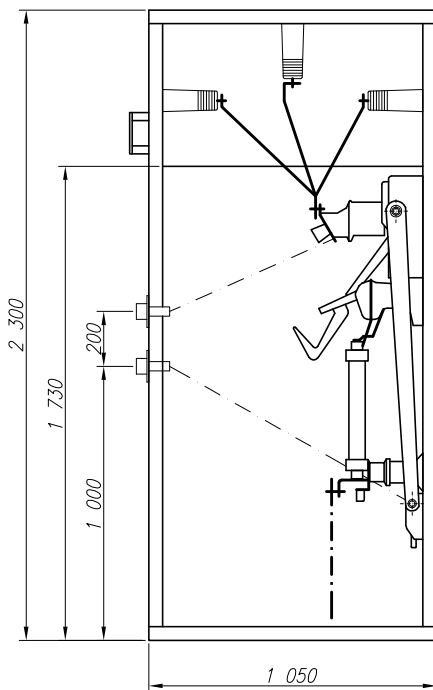


Wyposażenie dla wyprowadzenia	do kanału	za pole	boczne
Nr karty	37	38	39

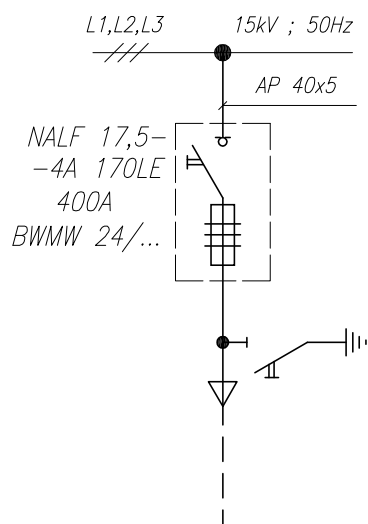
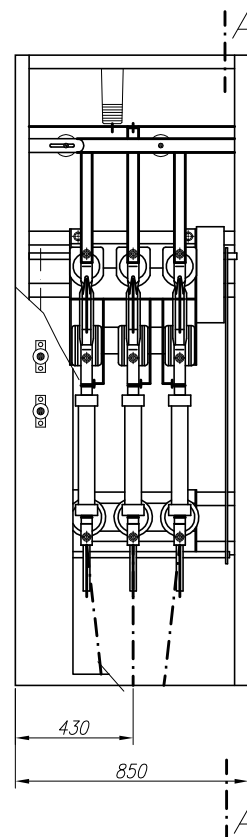
Elewacja



A-A

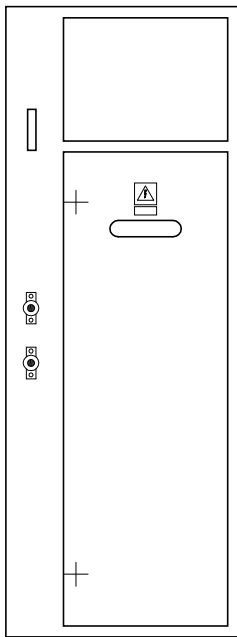


Widok bez drzwi

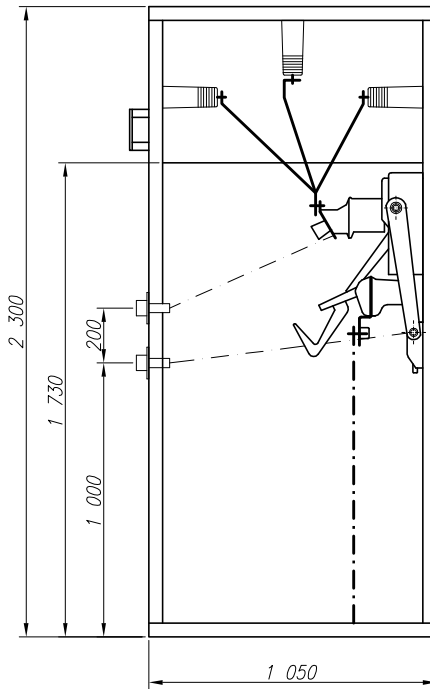


Wyposażenie dla wyprowadzenia	do kanału	za pole	boczne
Nr karty	37	38	39

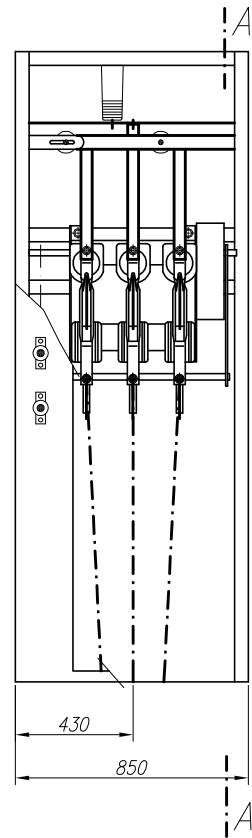
Elewacja



A-A

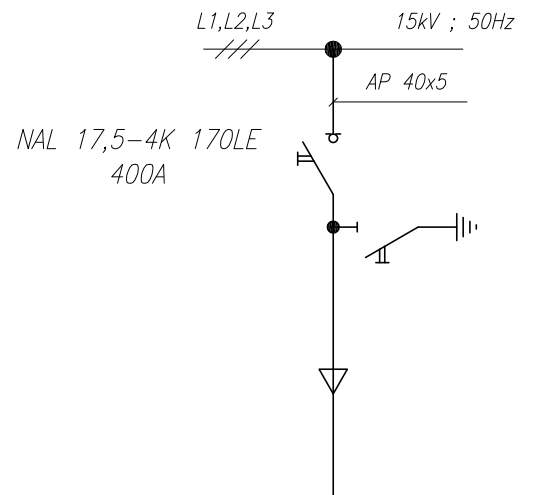
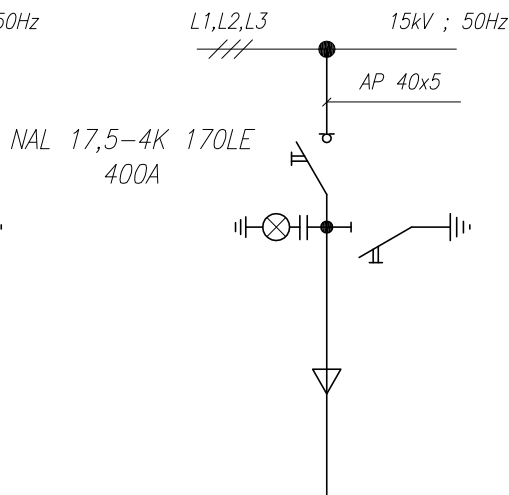
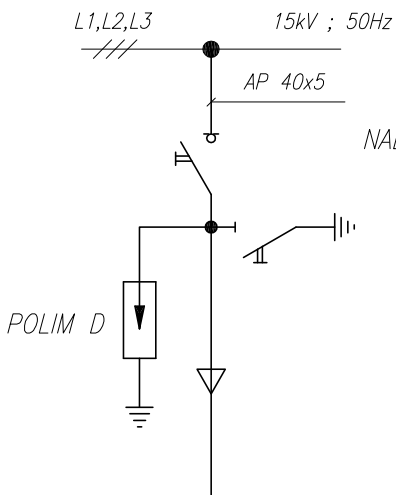


Widok bez drzwi



Ma15-L101

Ma15-L1+izol.reakt.

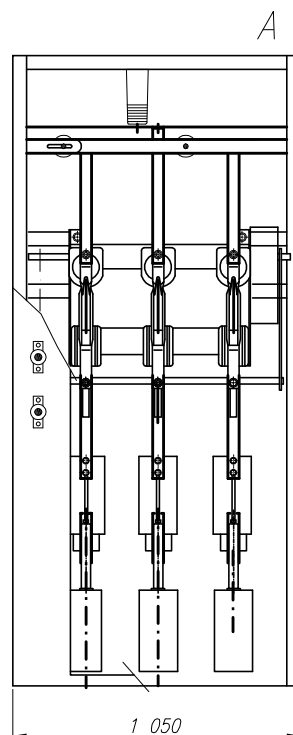
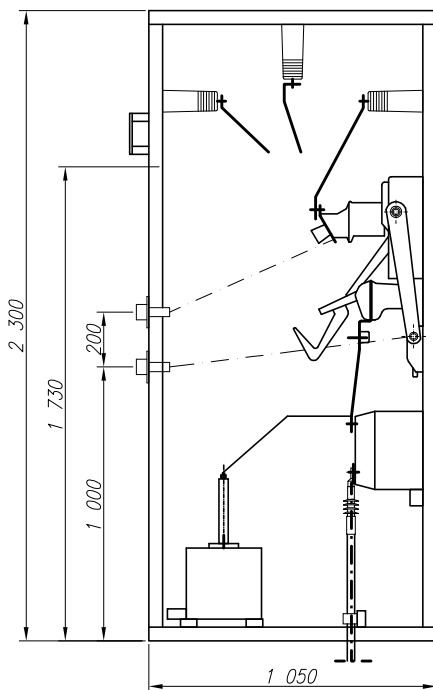
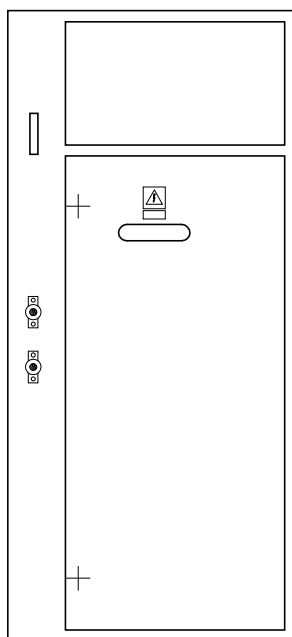


<i>ograniczniki przepięć</i>	<i>kabel HAKnFtA</i>	<i>kabel YHAKXS</i>	<i>Wyposażenie</i>
35	34	33	<i>Nr karty</i>

Elewacja

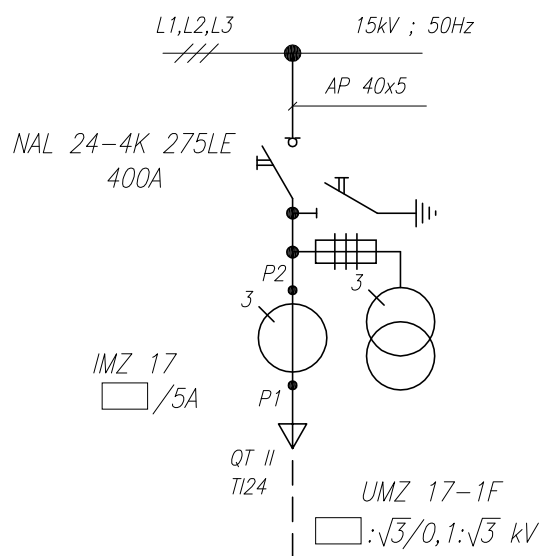
A-A

Widok bez drzwi



A

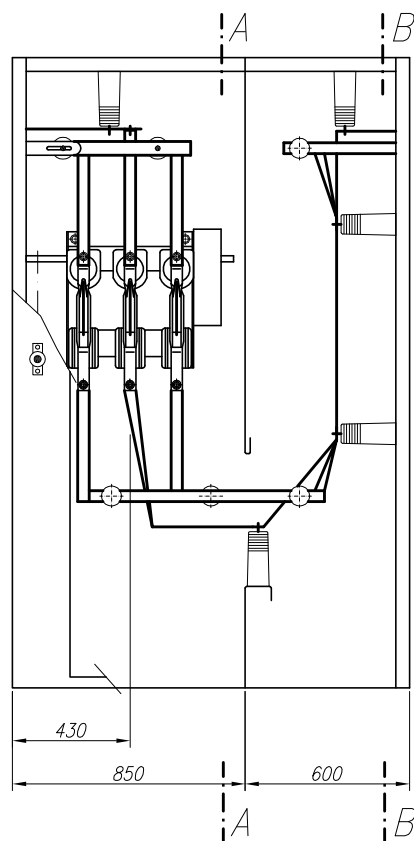
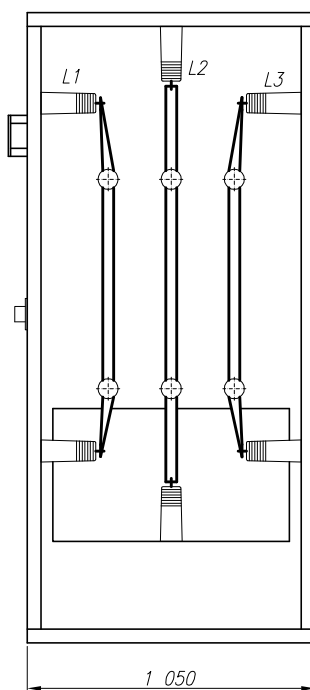
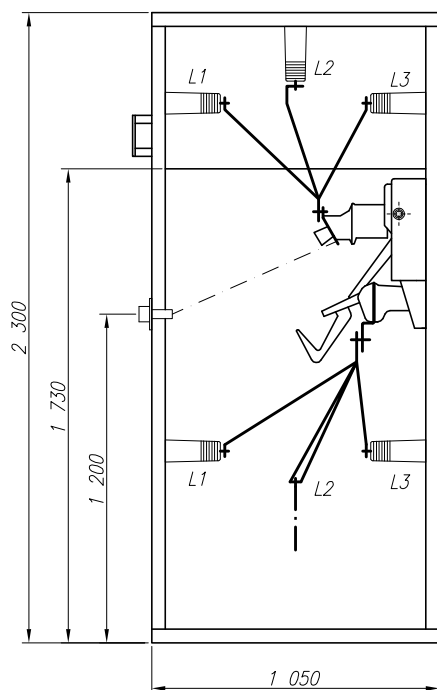
— · — · —
A



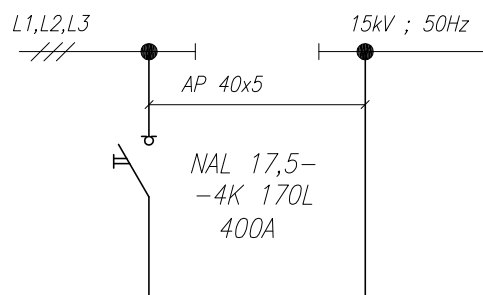
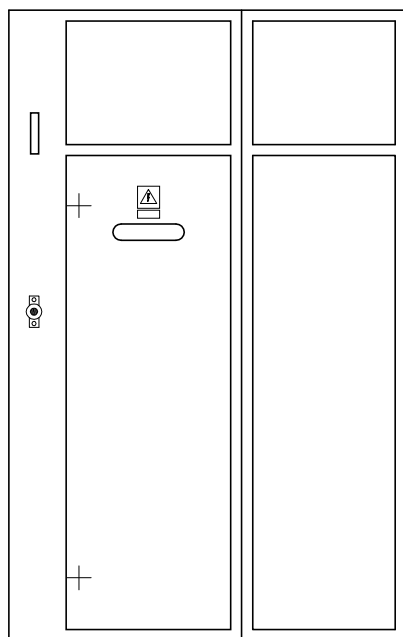
A-A

B-B

Widok bez drzwi



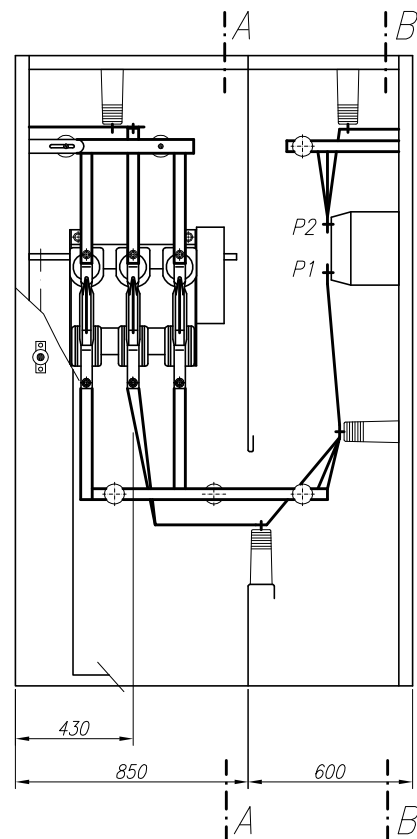
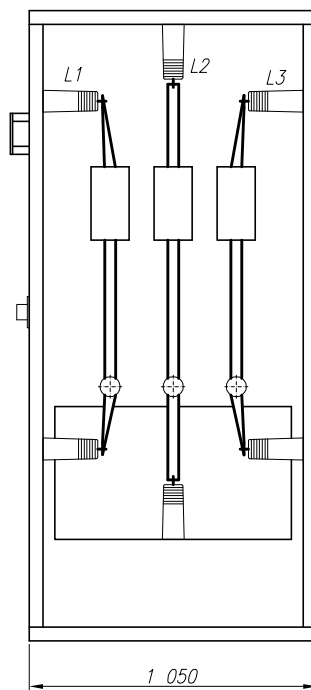
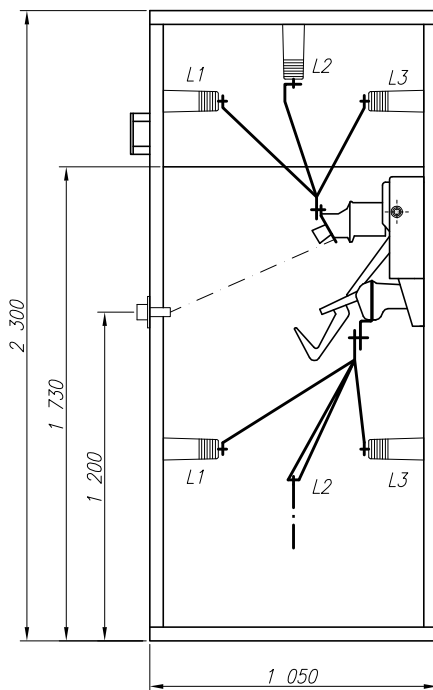
Elewacja



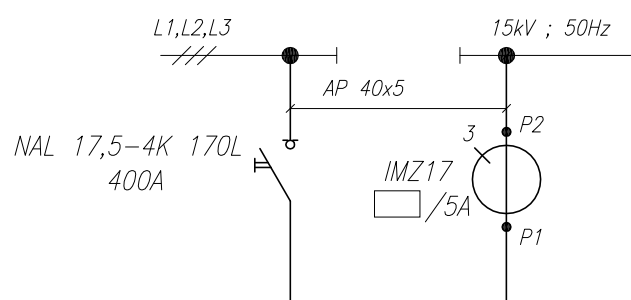
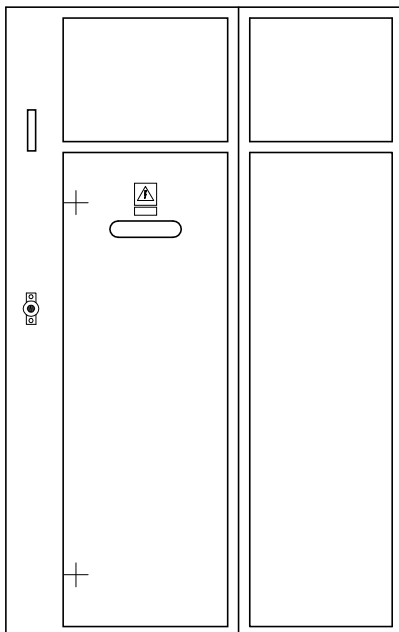
A-A

B-B

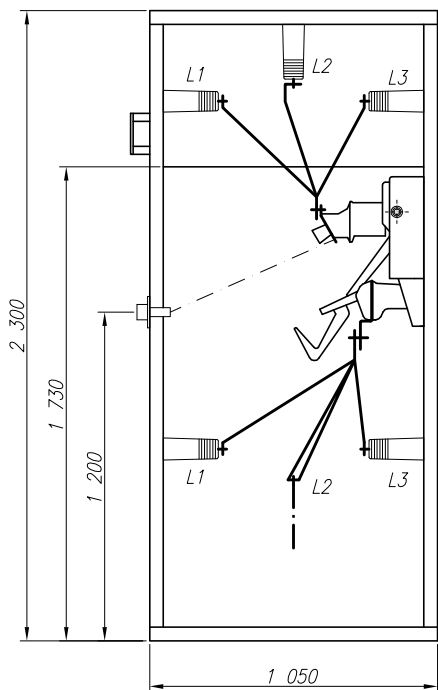
Widok bez drzwi



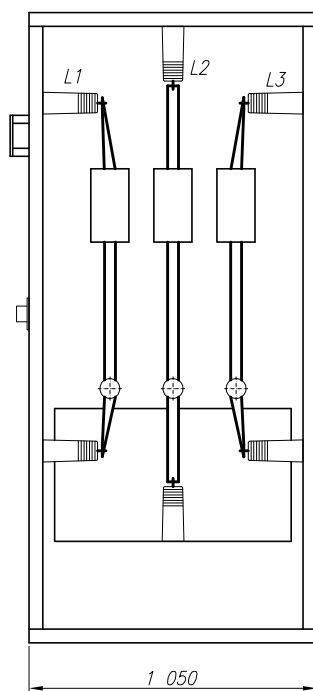
Elewacja



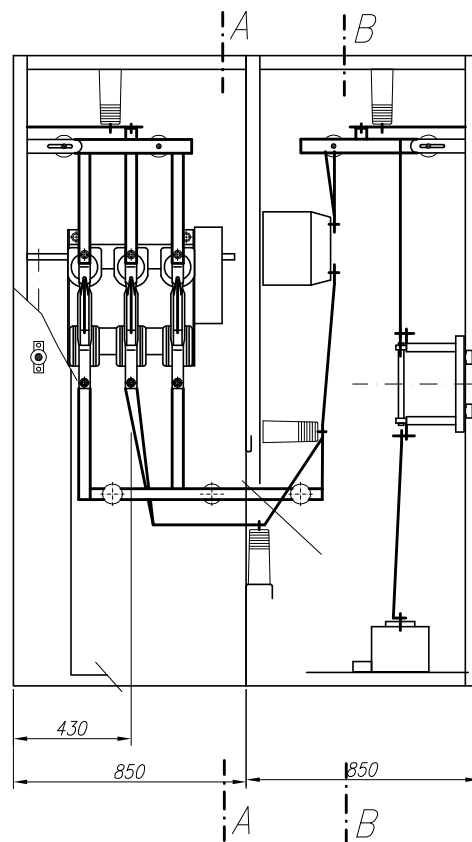
A-A



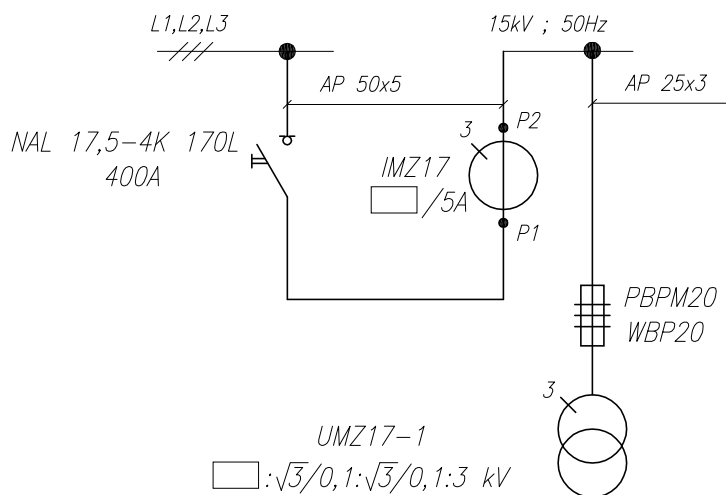
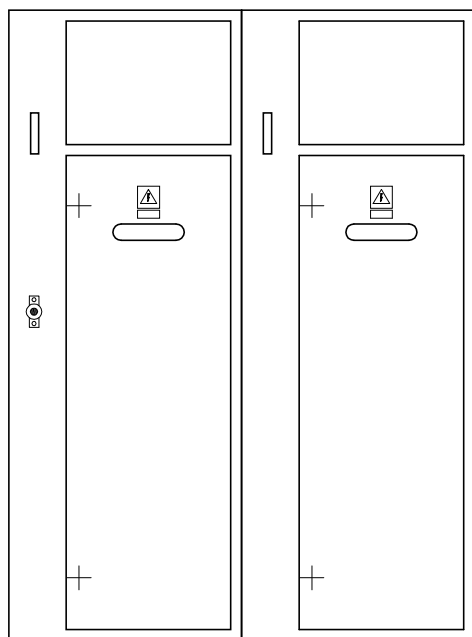
B-B



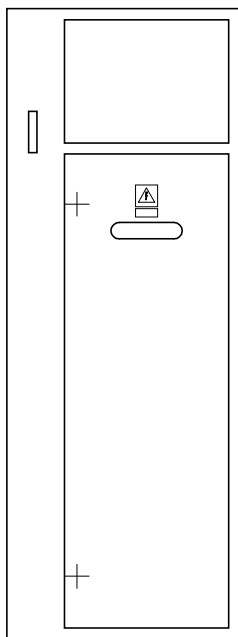
Widok bez drzwi



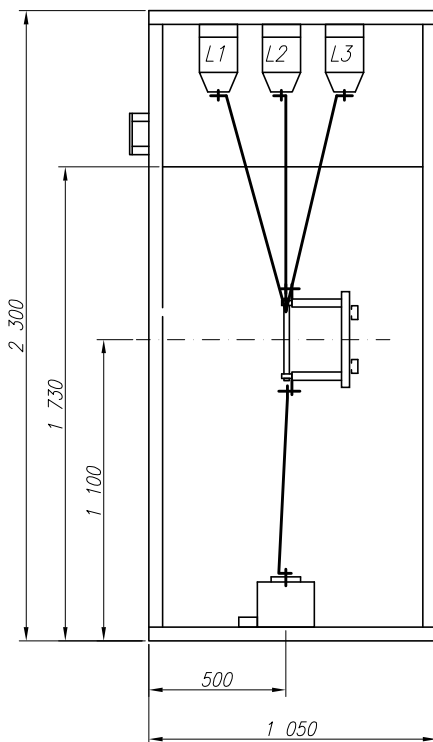
Elewacja



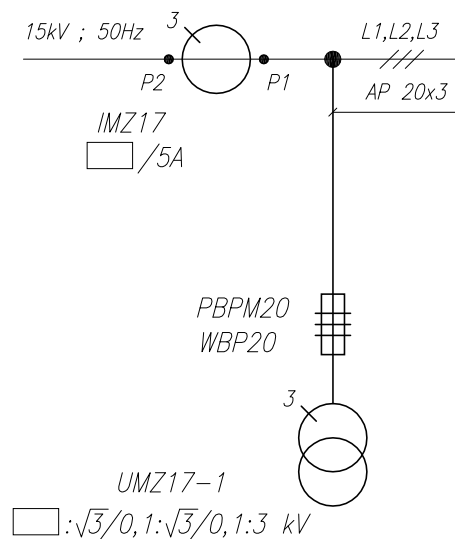
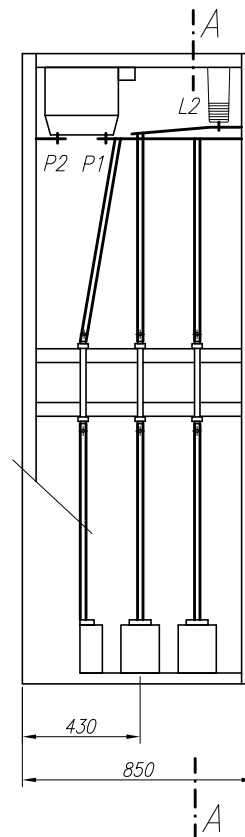
Elewacja



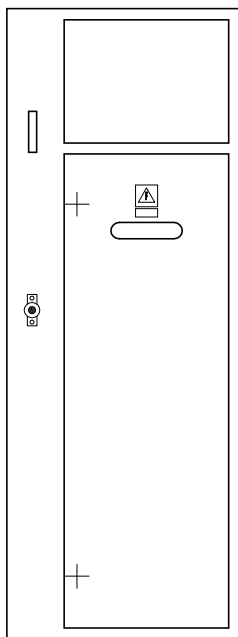
A-A



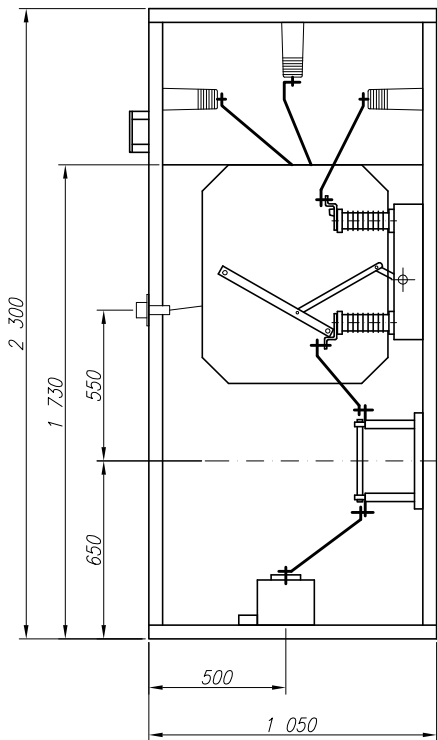
Widok bez drzwi



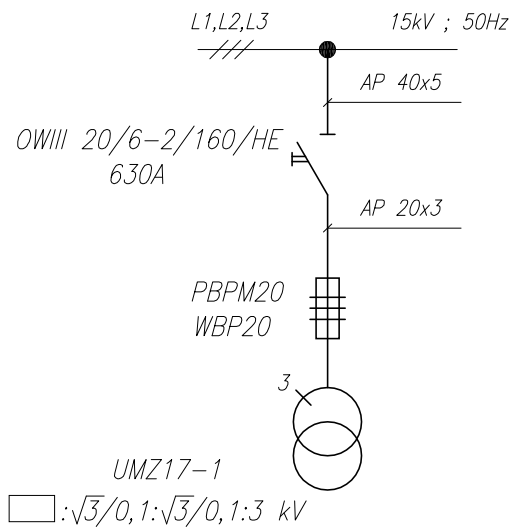
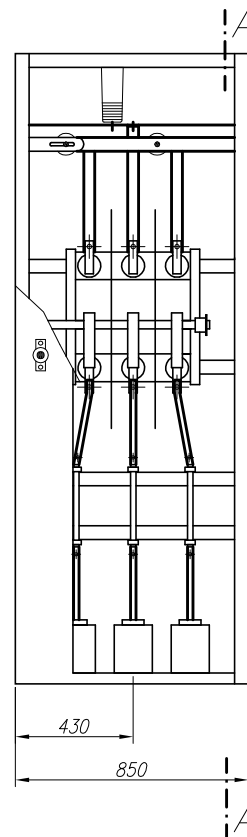
Elewacja



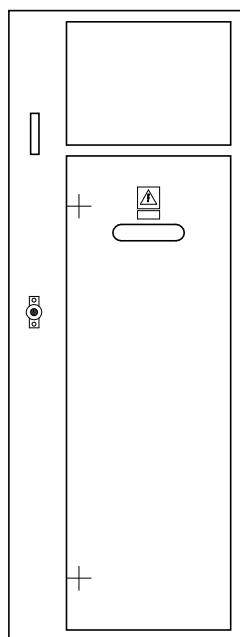
A-A



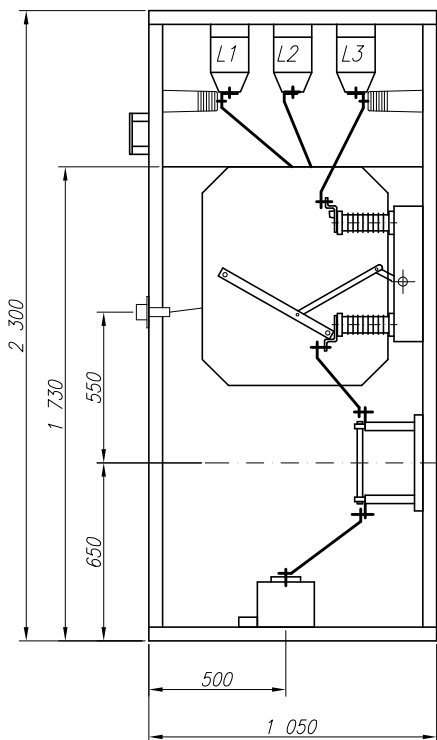
Widok bez drzwi



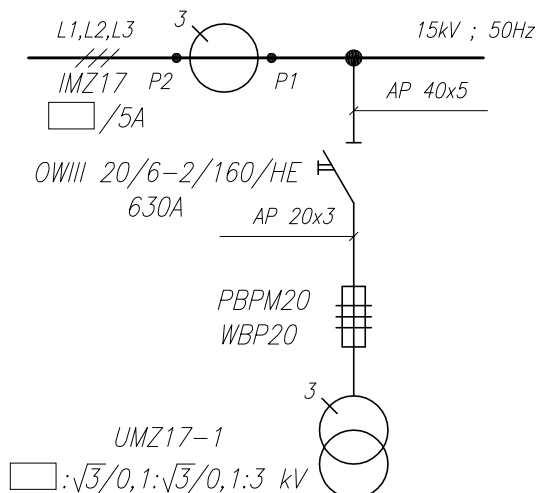
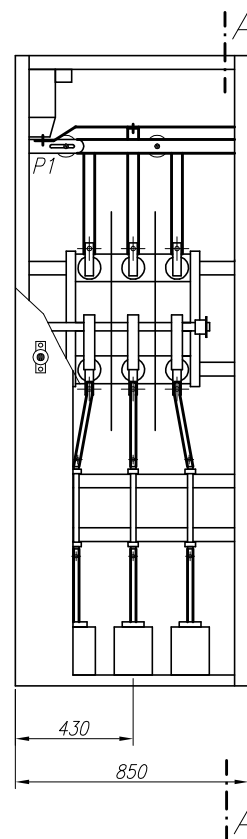
Elewacja



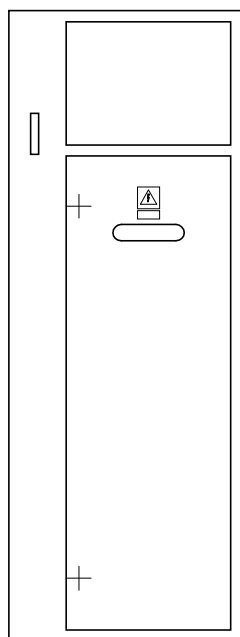
A-A



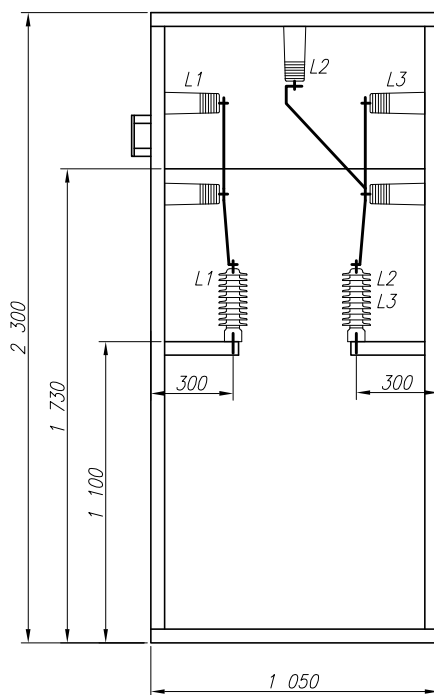
Widok bez drzwi



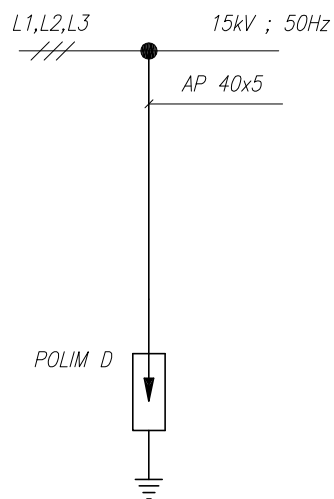
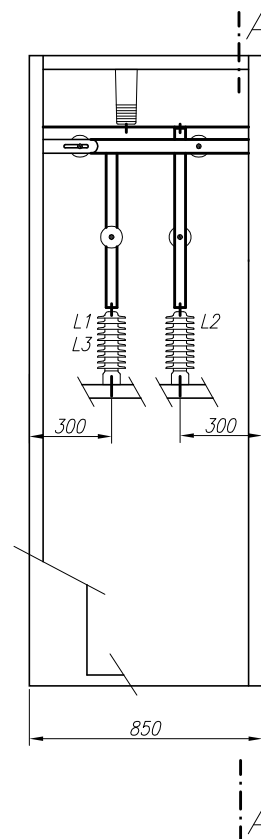
Elewacja



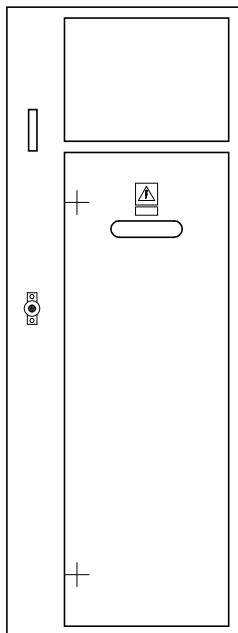
A-A



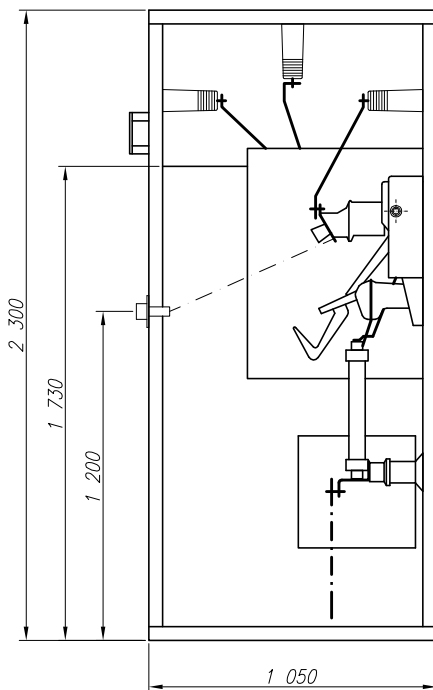
Widok bez drzwi



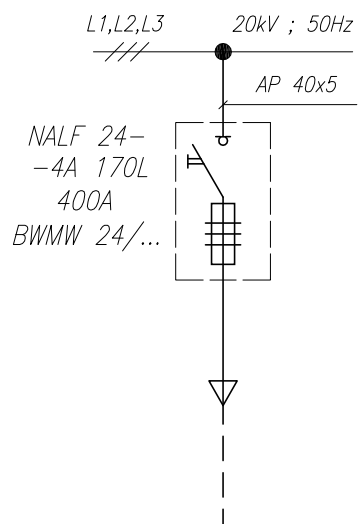
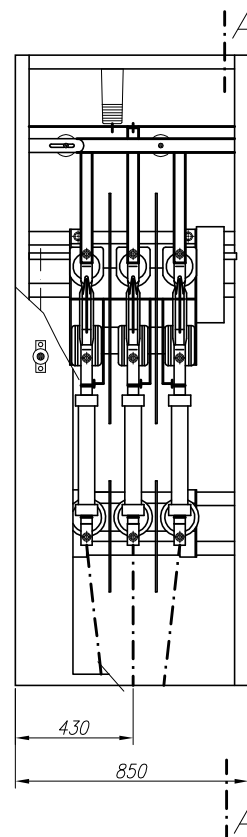
Elewacja



A-A

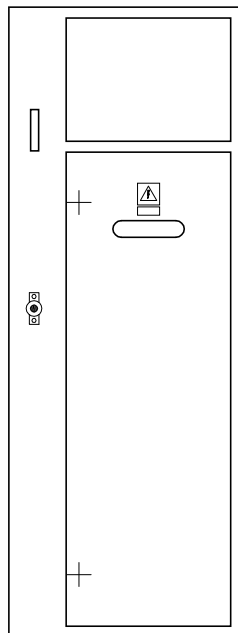


Widok bez drzwi

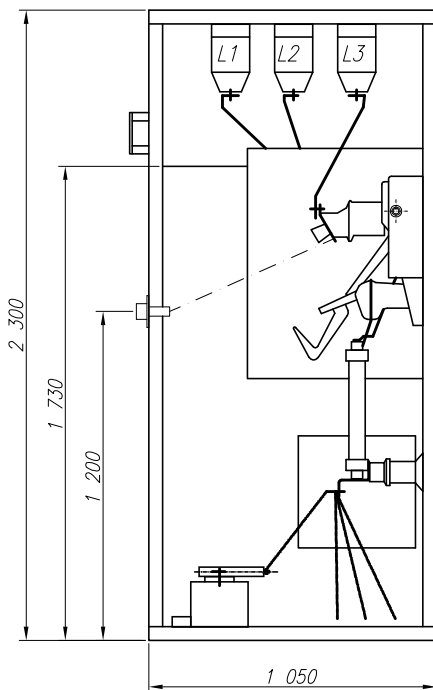


<i>Wyposażenie dla wprowadzenia</i>	<i>do kanału</i>	<i>za pole</i>	<i>boczne</i>
<i>Nr karty</i>	<i>37</i>	<i>38</i>	<i>40</i>

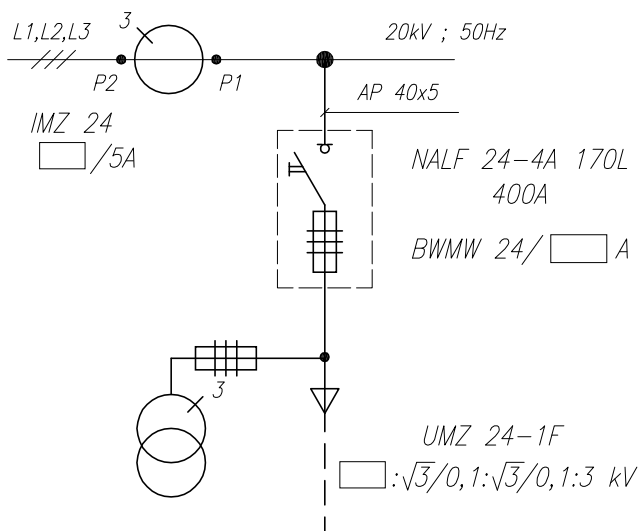
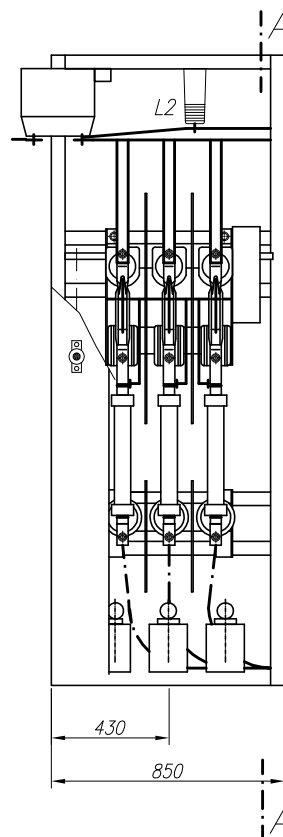
Elewacja



A-A

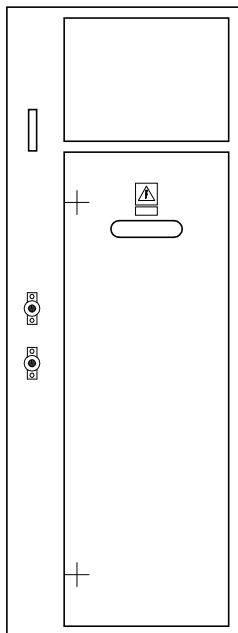


Widok bez drzwi

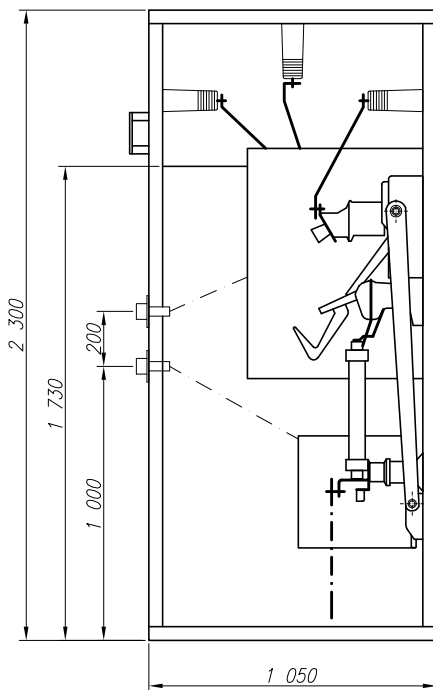


Wyposażenie dla wprowadzenia	do kanału	za pole	boczne
Nr karty	37	38	40

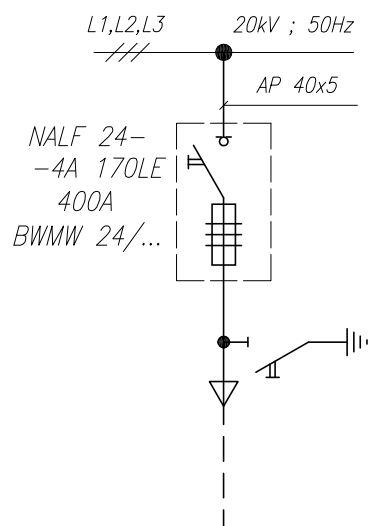
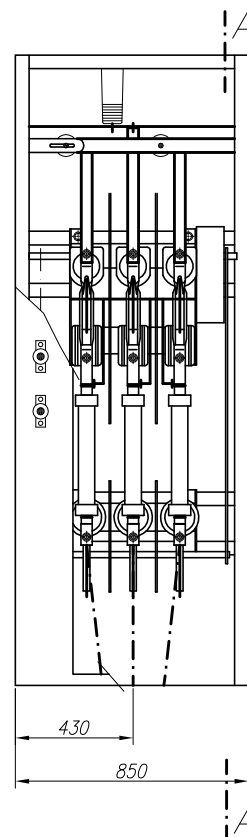
Elewacja



A-A

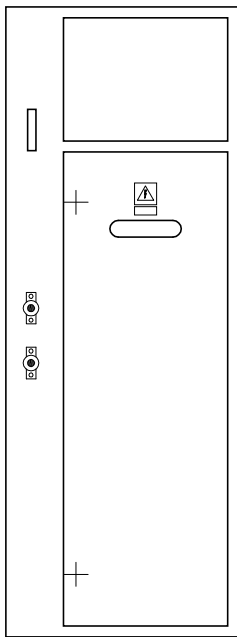


Widok bez drzwi

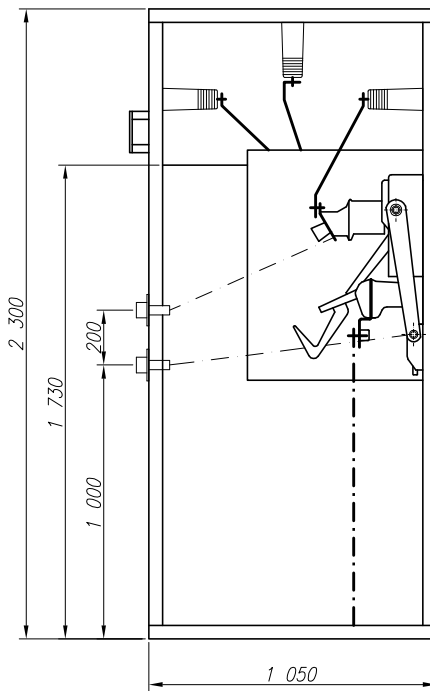


Wyposażenie dla wyprowadzenia	do kanału	za pole	boczne
Nr karty	37	38	40

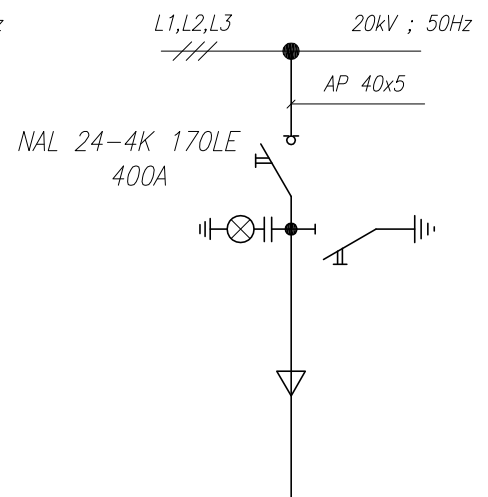
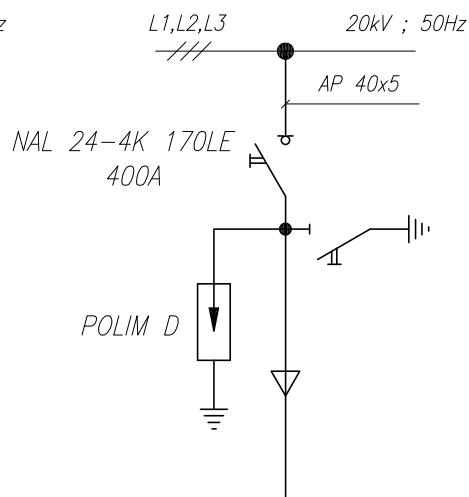
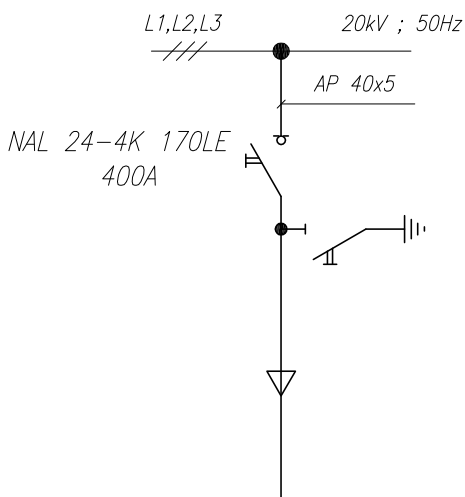
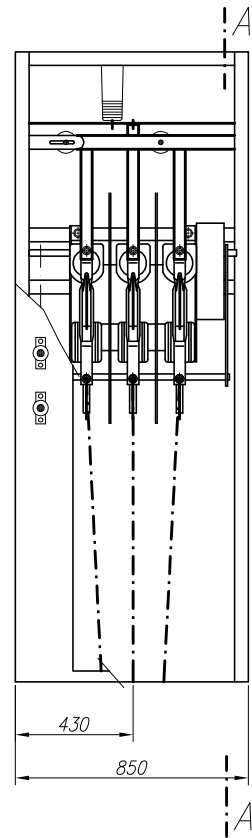
Elewacja



A-A

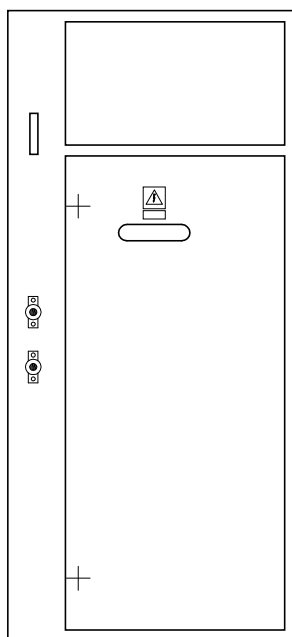


Widok bez drzwi

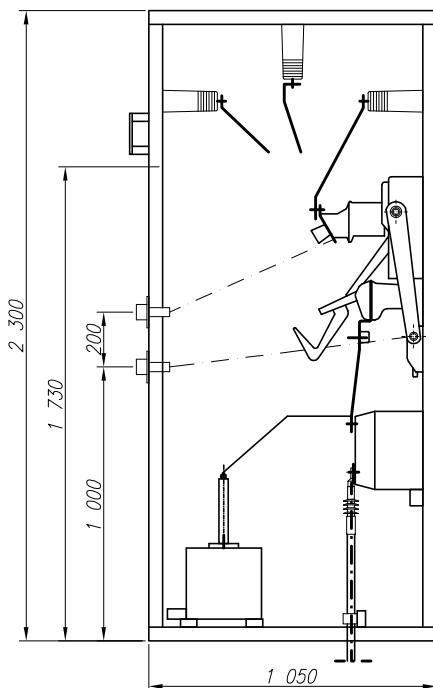


<i>ograniczniki przepięć</i>	<i>kabel HAKnFtA</i>	<i>kabel YHAKXS</i>	<i>Wyposażenie</i>
36	34	33	<i>Nr karty</i>

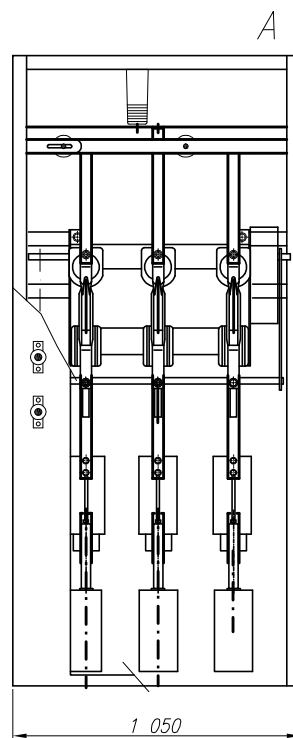
Elewacja



A-A

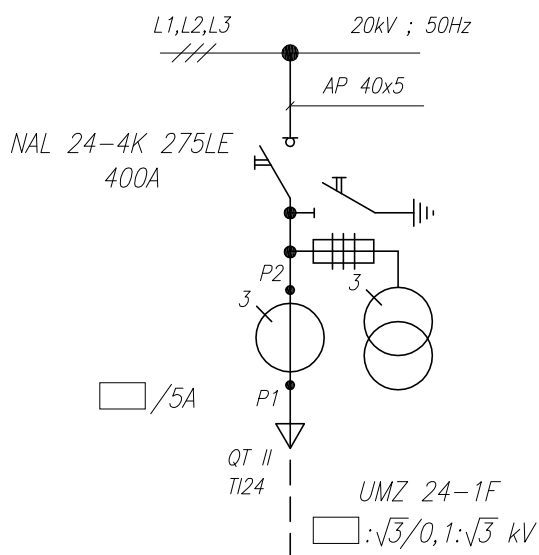


Widok bez drzwi



A

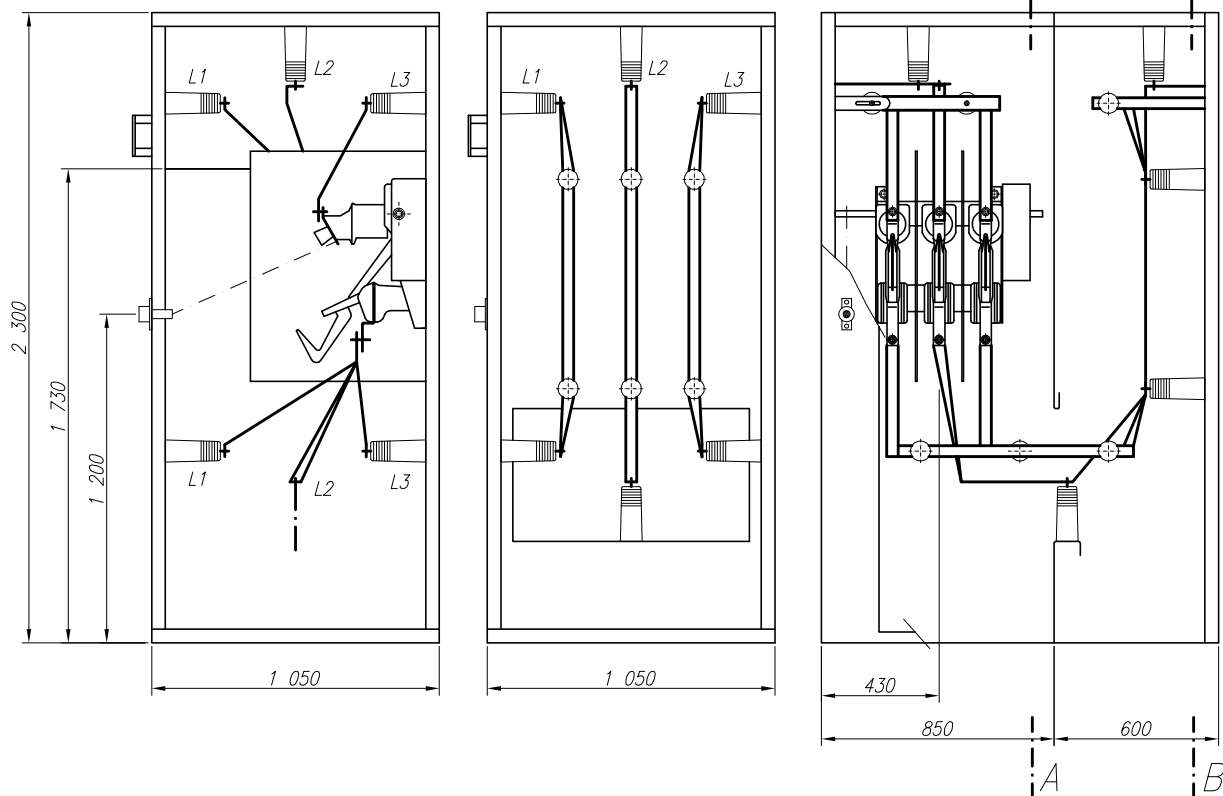
— · — · —
A



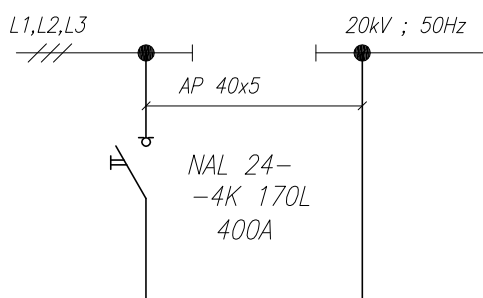
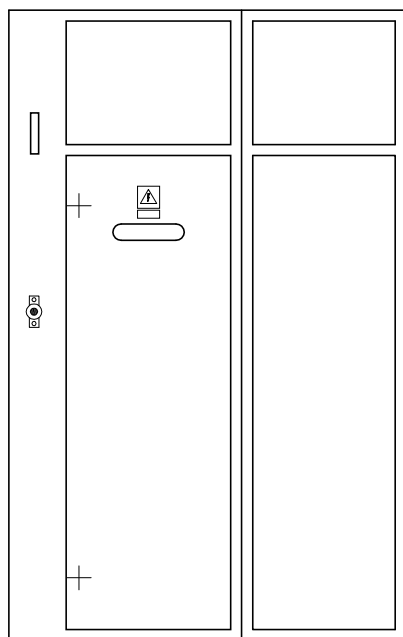
A-A

B-B

Widok bez drzwi



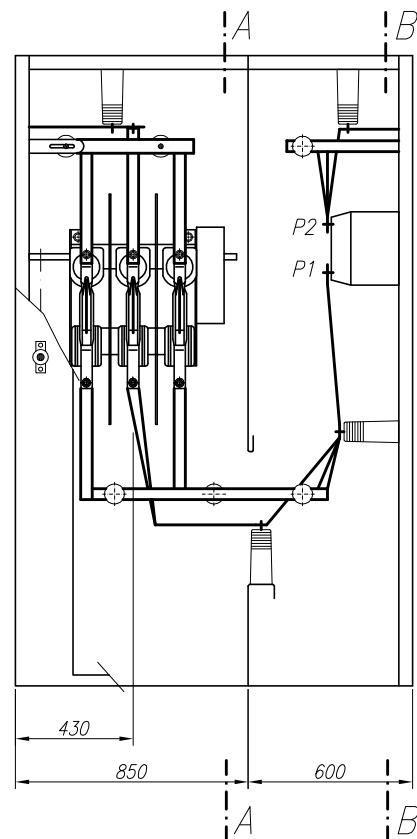
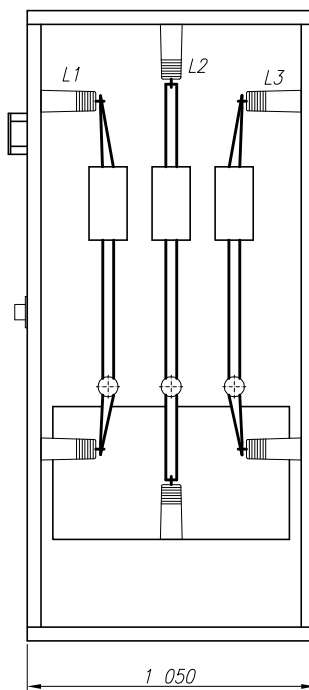
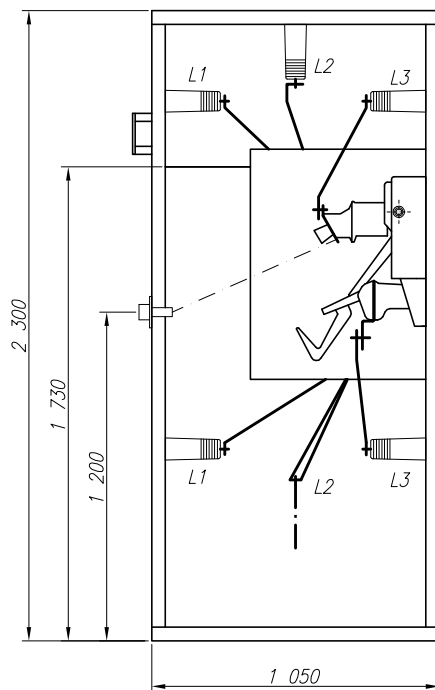
Elewacja



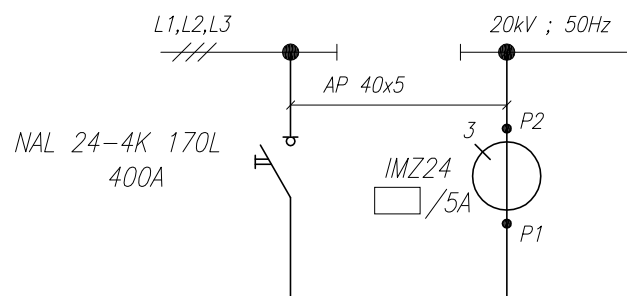
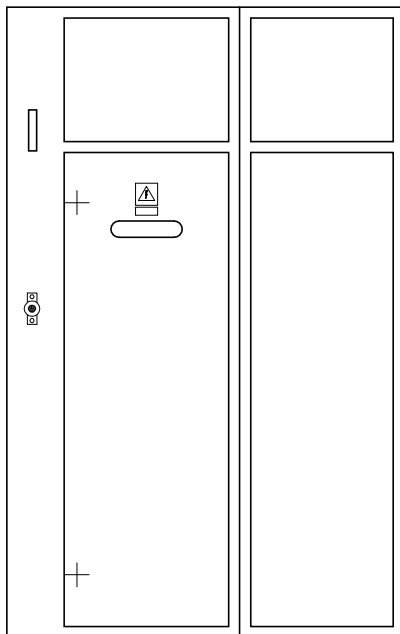
A-A

B-B

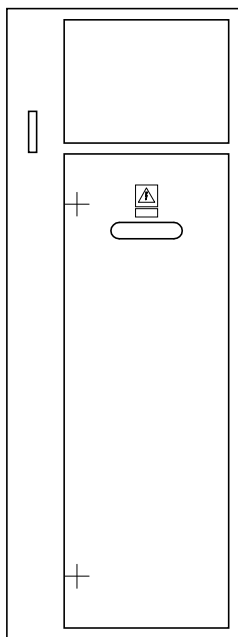
Widok bez drzwi



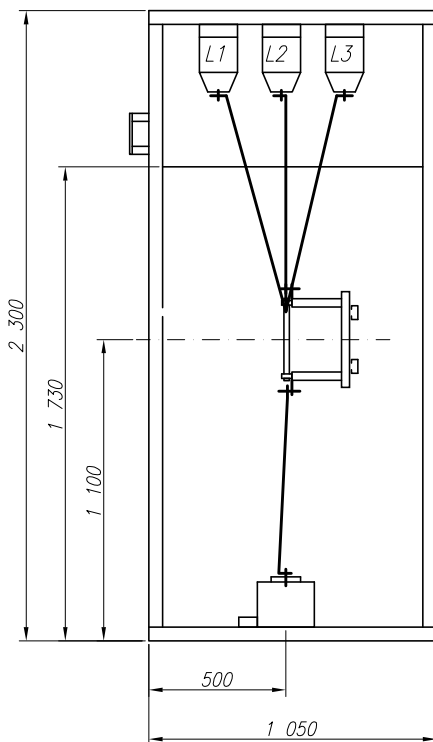
Elewacja



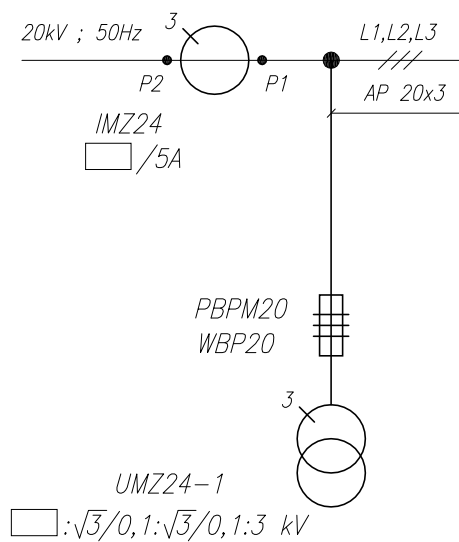
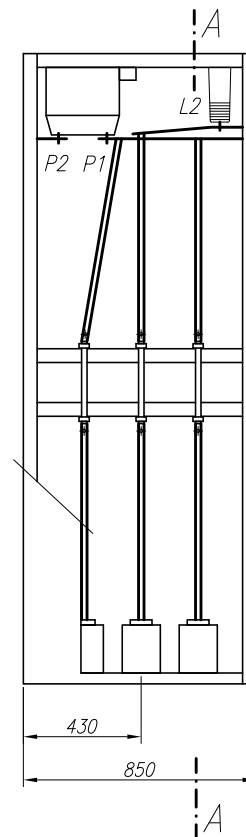
Elewacja



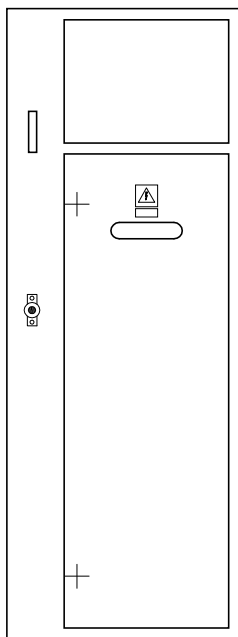
A-A



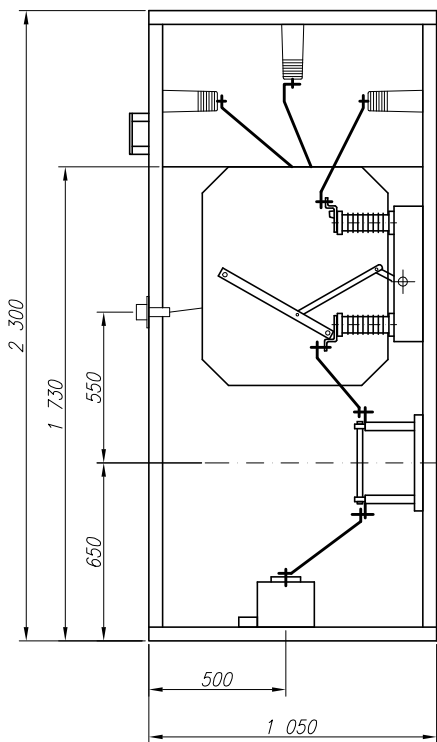
Widok bez drzwi



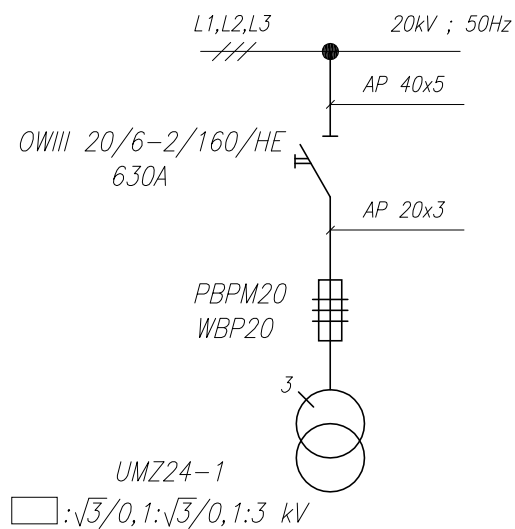
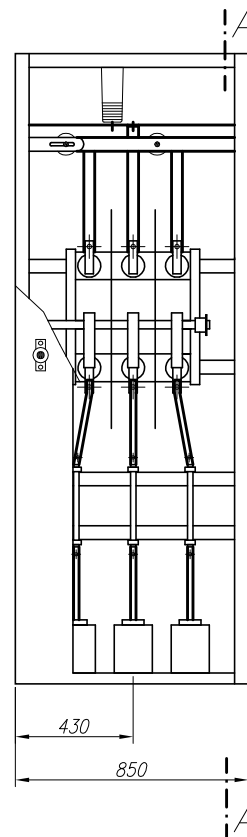
Elewacja



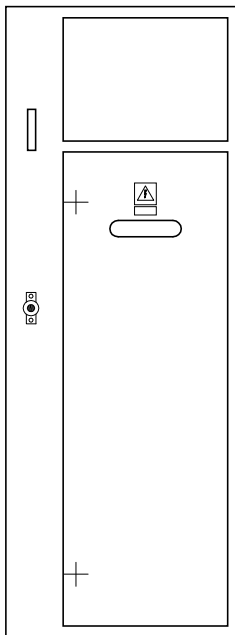
A-A



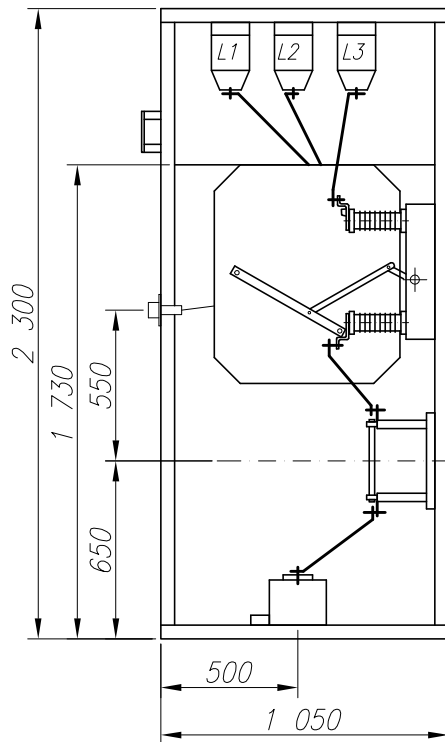
Widok bez drzwi



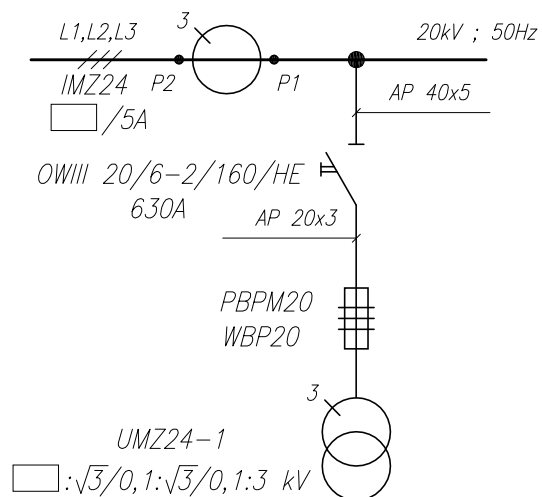
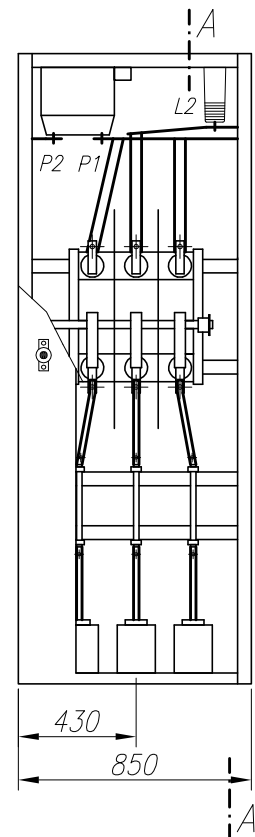
Elewacja



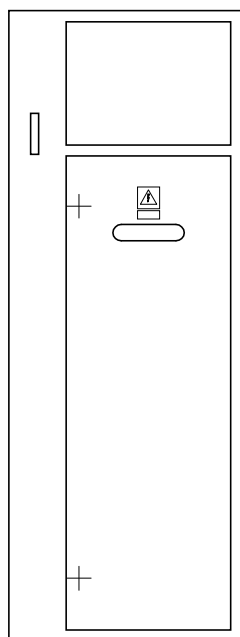
A-A



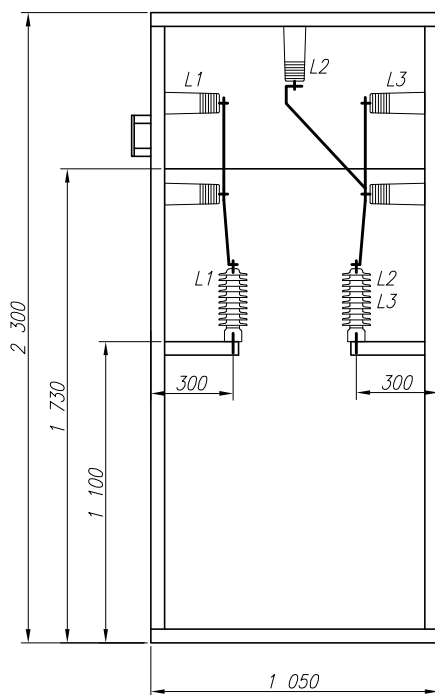
Widok bez drzwi



Elewacja



A-A



Widok bez drzwi

